

F705R.2-HXP TECHNO

Temporary



kg/m

F705R.2-HXP TECHNO

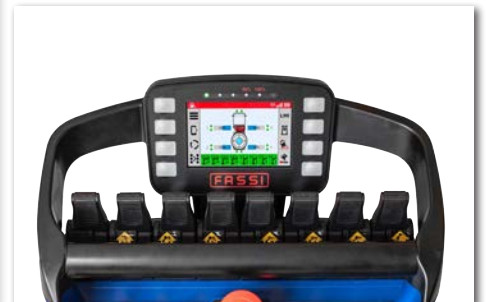
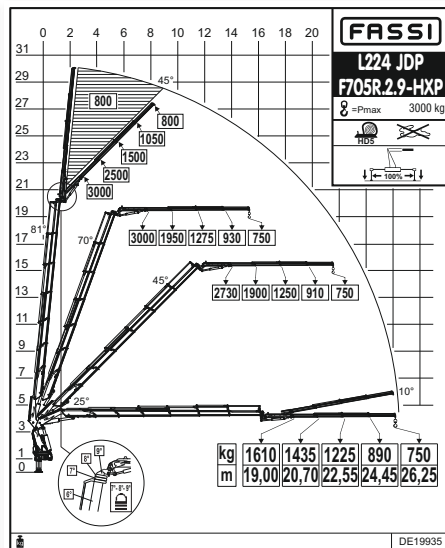
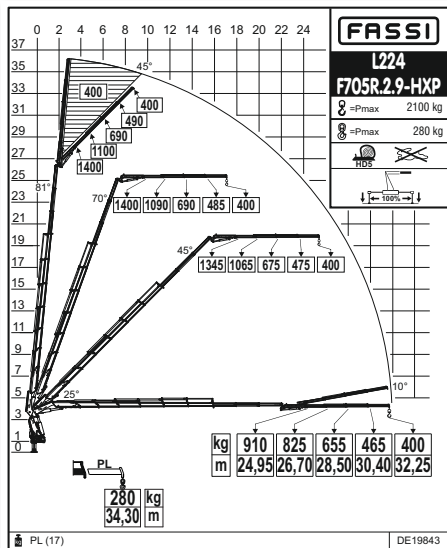
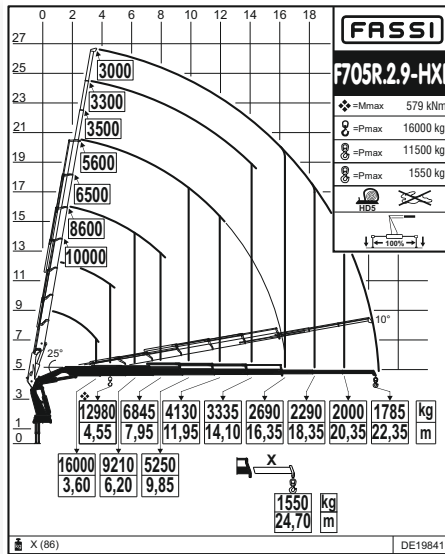
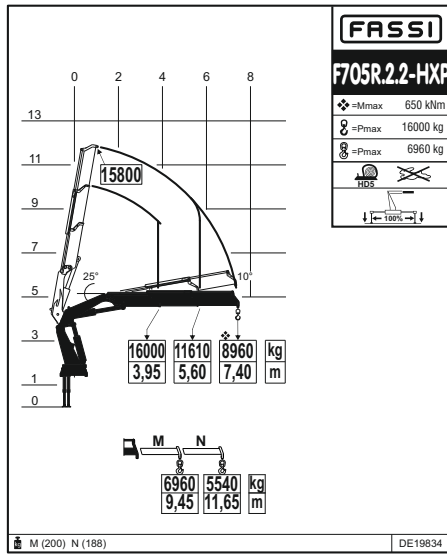


LEADER **IN** INNOVATION

## F705R.2-HXP TECHNO

### Load diagrams - kg/m

**FASSI**  
LEADER IN INNOVATION



<b>F705R.2.2</b>	66,3	7,40	3,45	360°	45	35,5	100	250	5240	2550	1540	2490
<b>F705R.2.9</b>	59,0	22,35	17,80	360°	45	35,5	100	250	7110	2550	1695	2490
<b>F705R.2.9 L224</b>	59,0	32,25	25,10	360°	45	35,5	100	250	7925	2550	1850	2940

<b>Lifting capacity</b>												
<b>Standard reach</b>												
<b>Hydraulic extension</b>												
<b>Rotation</b>												
<b>Rotation torque</b>												
<b>Working pressure</b>												
<b>Pump capacity</b>												
<b>Oil tank capacity</b>												
<b>Crane weight</b>												
<b>Crane width</b>												
<b>Installation width</b>												
<b>Crane height</b>												

# X Design

## PERFORMANCE

The decagonal section is characterised by increased mechanical performance, motion guides and the inertial stability of vertical loads. The result is that, in comparison to the hexagonal section, lighter solutions can be developed that offer the same mechanical performance, and higher mechanical performance can be achieved with the same weight.

# F705R.2-HXP TECHNO

New lifting moment limiting device FX990

Excellent power-to-weight ratio

Stability control FSC TECHNO

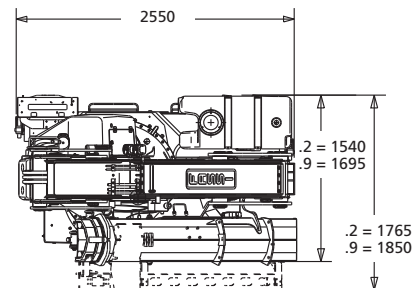
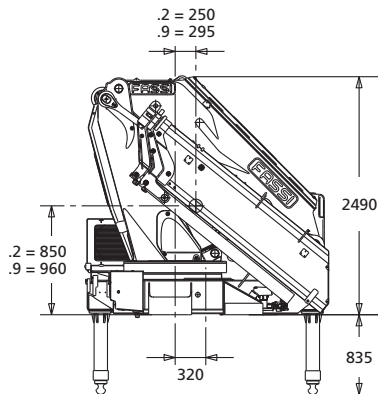
Permanent pulley system

Excellent hydraulic boom

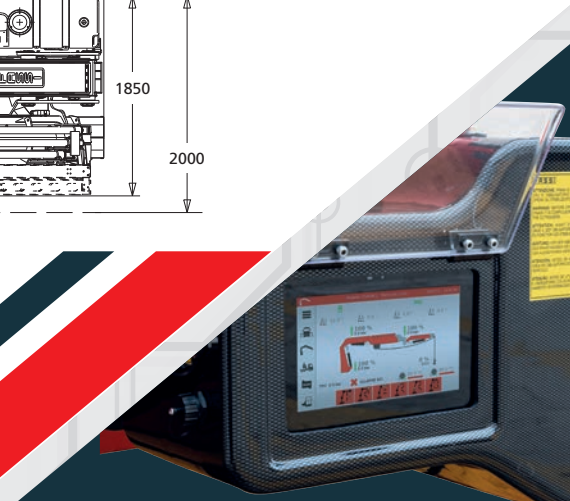
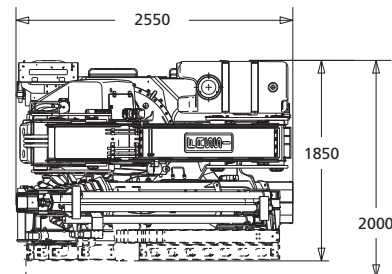
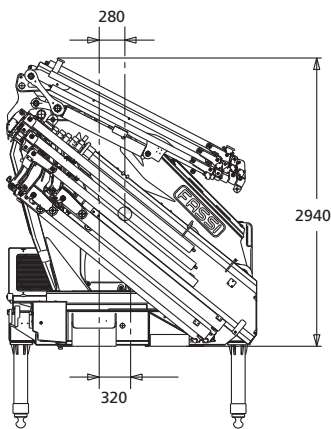
Jibs L626 and L436



## F705R.2-HXP TECHNO



## L SERIE



# TECHNO

The main feature of the new **FX990** unit is the significant increase in resources with **three CAN-BUS lines**; one dedicated to sensors, one to controls and one to vehicle connection. The latter relates to the importance of previous developments, from FX-Link to the DBF (Drive by Fassi) function for the remote control of the truck via the crane's V7 radio controller. In addition, **two Ethernet lines** further **extend connectivity and processing power**, another first.

# Lifting Tomorrow



**LEADER IN INNOVATION**



FASSI GRU S.p.A.  
Via Roma, 110  
24021 Albino (Bergamo) ITALY  
Tel +39 035 776400  
Fax +39 035 755020  
[www.fassi.com](http://www.fassi.com)  
[fassigr@fassigr.com](mailto:fassigr@fassigr.com)

COMPANY WITH  
MANAGEMENT SYSTEM  
CERTIFIED BY DNV GL  
= ISO 9001 =  
= ISO 14001 =